

## E-Cadherin Antibody [clone CDH1/1525] (V3190)

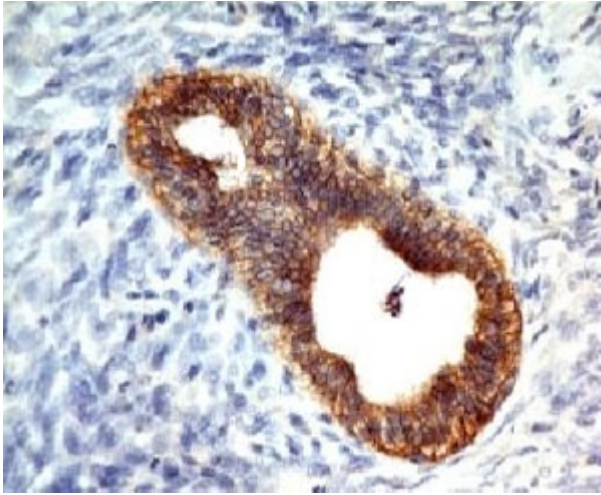
| Catalog No.    | Formulation  | Size   |
|----------------|--|--------|
| V3190-100UG    | 0.2 mg/ml in 1X PBS with 0.1 mg/ml BSA (US sourced) and 0.05% sodium azide | 100 ug |
| V3190-20UG     | 0.2 mg/ml in 1X PBS with 0.1 mg/ml BSA (US sourced) and 0.05% sodium azide | 20 ug  |
| V3190SAF-100UG | 1 mg/ml in 1X PBS; BSA free, sodium azide free                             | 100 ug |

[Bulk quote request](#)

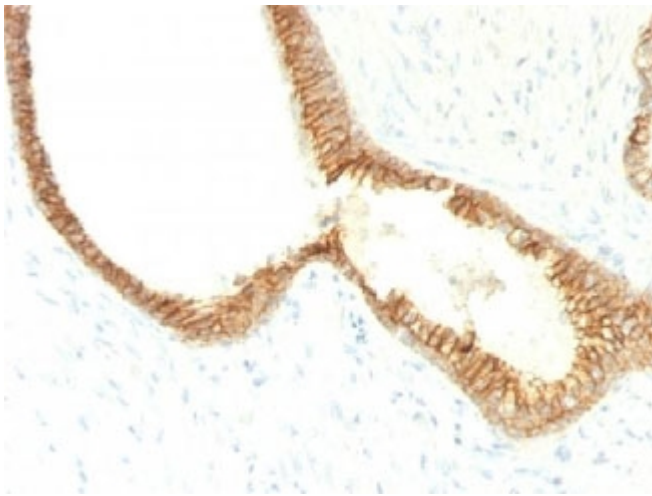
|                           |  |
|---------------------------|--|
| <b>Availability</b>       | 1-3 business days  |
| <b>Species Reactivity</b> | Human. Not suitable for Mouse and Rat sample testing. Other species not known.   |
| <b>Format</b>             | Purified   |
| <b>Clonality</b>          | Monoclonal (mouse origin)  |
| <b>Isotype</b>            | Mouse IgG1, kappa  |
| <b>Clone Name</b>         | CDH1/1525  |
| <b>Purity</b>             | Protein G affinity chromatography  |
| <b>UniProt</b>            | P12830   |
| <b>Localization</b>       | Cytoplasmic, membranous  |
| <b>Applications</b>       | Flow Cytometry : 0.5-1ug/million cells in 0.1ml<br>Immunofluorescence : 0.5-1ug/ml<br>Western blot : 0.5-1ug/ml<br>Immunohistochemistry (FFPE) : 1-2ug/ml for 30 min at RT (1) |
| <b>Limitations</b>        | This E-Cadherin antibody is available for research use only.   |



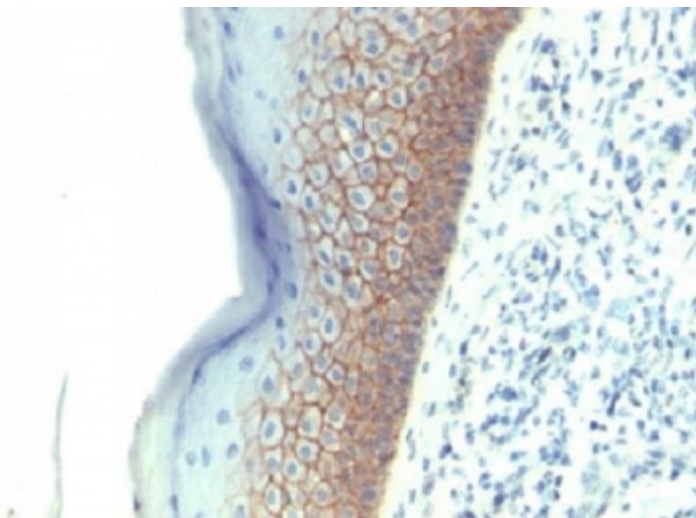
Formalin-fixed, paraffin-embedded human colon carcinoma stained with E-Cadherin antibody (CDH1/1525).



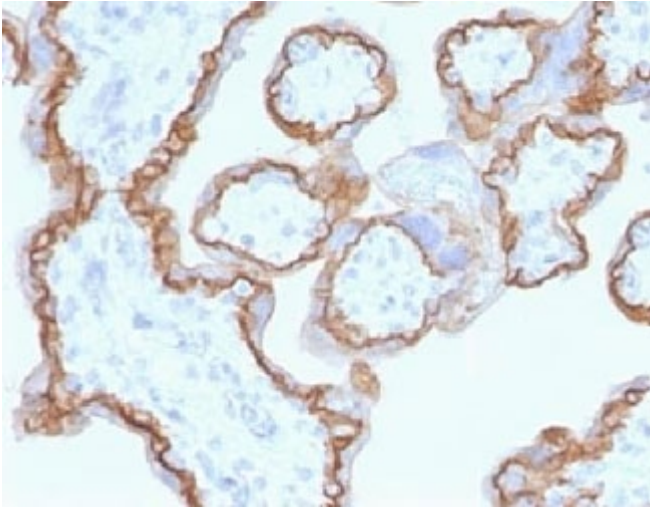
Formalin-fixed, paraffin-embedded human colon carcinoma stained with E-Cadherin antibody (CDH1/1525).



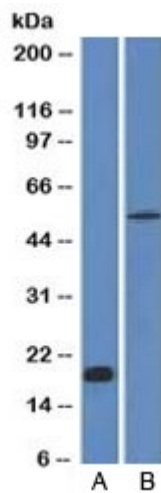
Formalin-fixed, paraffin-embedded human prostate carcinoma stained with E-Cadherin antibody (CDH1/1525).



Formalin-fixed, paraffin-embedded human skin stained with E-Cadherin antibody (CDH1/1525).



Formalin-fixed, paraffin-embedded human placenta stained with E-Cadherin antibody (CDH1/1525).



Western blot analysis A) partial recombinant protein B) human stomach lysate using E-Cadherin antibody (CDH1/1525). Expected molecular weight: 135 kDa (precursor), 80-120 kDa (mature, depending on glycosylation level).

## Description

Recognizes a protein of 80-120kDa, identified as E-cadherin. Cadherins comprise a family of  $Ca^{2+}$ -dependent adhesion molecules that function to mediate cell-cell binding critical to the maintenance of tissue structure and morphogenesis. The classical cadherins, E-, N- and P-cadherin, consist of large extracellular domains characterized by a series of five homologous NH<sub>2</sub> terminal repeats. The relatively short intracellular domains interact with a variety of cytoplasmic proteins, such as  $\beta$ -catenin, to regulate cadherin function. E-cadherin plays an important role in epithelial cell adhesion. A decreased expression of E-cadherin is associated with metastatic potential and poor prognosis in breast cancer, prostate and esophageal cancer. In combination with p120 Catenin, it is useful for the differentiation between ductal (E-cadherin +) and lobular (E-cadherin -) breast carcinomas. It may also help in diagnosis of mesothelioma.

## Application Notes

Optimal dilution of the E-Cadherin antibody should be determined by the researcher.

1. Staining of formalin-fixed tissues requires boiling tissue sections in 10mM Citrate buffer, pH 6.0, for 10-20 min followed by cooling at RT for 20 min.

## Immunogen

A full length recombinant human protein was used as the immunogen for the E-Cadherin antibody.

## Storage

Store the E-Cadherin antibody at 2-8°C (with azide) or aliquot and store at -20°C or colder (without azide).