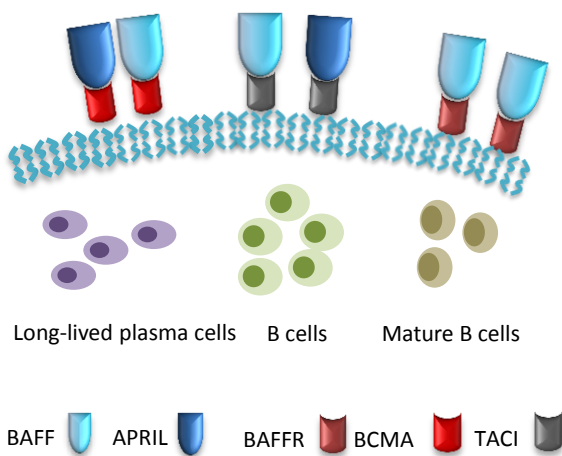


Biotinylated BCMA Proteins

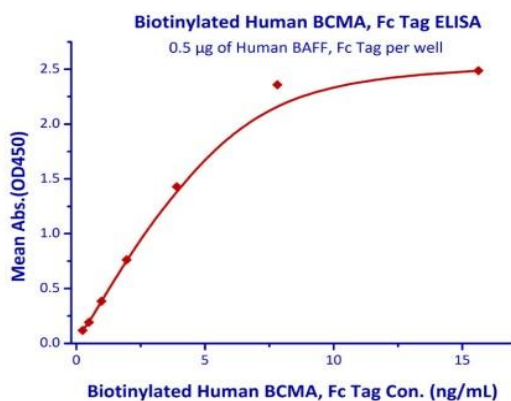
BCMA is selectively induced during plasma cell differentiation and is nearly absent on naive and memory B cells (Avery et al., 2003; Chiu et al., 2007). The interaction between BCMA and its ligand BAFF and APRIL is involved for the maintenance of long-lived plasma cells (O'Connor et al., 2004; Peperzak et al., 2013). Multiple BCMA-targeted therapies of B-cell derived malignancies are underdevelopment, including BCMA-targeting chimeric antigen receptor T (CAR-T) and GlaxoSmithKline's GSK2857916.



Selective interaction between BAFF/APRIL and their receptors. Note BCMA can interact with both BAFF and APRIL (Bolkun et al., 2016). The affinity of APRIL-BCMA interaction, however, is much higher than that of BAFF-BCMA binding (Bossen and Schneider, 2006).

ACROBiosystems provides a comprehensive panel of BCMA proteins, including the exclusive biotinylated BCMA (Cat. # BC7-H82F0) and the monomeric BCMA (Cat. # BCA-H522y).

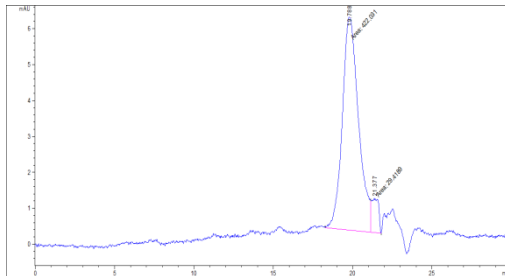
Molecule	Cat. No	Species	Structure
BCMA (Biotin-labeled)	BC7-H82F0	Human	BCMA (1-54) Fc Avi



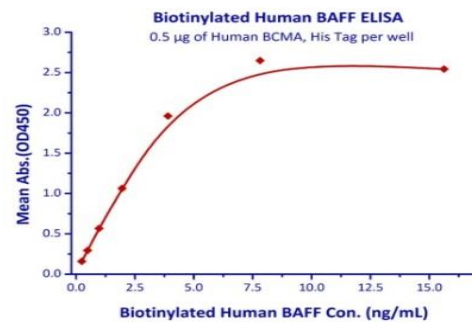
Immobilized Human BAFF, Fc Tag (Catalog # BAF-H4268) at 5µg/mL (100 µL/well) can bind Biotinylated Human BCMA, Fc Tag (Cat. # BC7-H82F0) with a linear range of 0.12-1.95 ng/mL.

Biotinylated BCMA Proteins

Molecule	Cat. No	Species	Structure
BCMA	BCA-H522y	Human	BCMA (1-54) His



The purity of Human BCMA, His Tag (Cat. # BCA-H522y) is greater than 93% as determined by SEC-HPLC.



Immobilized Human BCMA, His Tag (Cat. # BCA-H522y) at 5µg/mL (100 µL/well) can bind Biotinylated Human BAFF (Cat. # BAF-H82Q2) with a linear range of 0.24-3.9 ng/mL.

Molecule	Cat. No	Species	Structure
BCMA (FITC)	BCA-HF254	Human	BCMA (1-54) Fc
BCMA	BC7-H5254	Human	BCMA (1-54) Fc
BAFF	BAF-H4218	Human	BAFF (134-285)
BAFF	BAF-H4268	Human	Fc BAFF (134-285)
BAFF	BAF-H5248	Human	His BAFF (134-285)
BAFF (Biotin-labeled)	BAF-H82F3	Human	Avi Fc BAFF (134-285)
BAFF (FITC)	BAF-HF268	Human	Fc BAFF (134-285)
BAFF (Biotin-labeled)	BAF-H82Q2	Human	His Avi BAFF (134-285)
BAFFR (Biotin-labeled)	BAR-M82F0	Mouse	BAFFR (10-71) Fc Avi

Coming soon

Biotinylated Cyno-BCMA & Biotinylated mouse BAFFR.

References

- Avery, D.T., Kalled, S.L., Ellyard, J.I., Ambrose, C., Bixler, S.A., Thien, M., Brink, R., Mackay, F., Hodgkin, P.D., and Tangye, S.G. (2003). BAFF selectively enhances the survival of plasmablasts generated from human memory B cells. *J. Clin. Invest.* 112, 286–297.
- Chiu, A., Xu, W., He, B., Dillon, S.R., Gross, J.A., Sievers, E., Qiao, X., Santini, P., Hyjek, E., Lee, J., et al. (2007). Hodgkin lymphoma cells express TACI and BCMA receptors and generate survival and proliferation signals in response to BAFF and APRIL. *Blood* 109, 729–739.
- O'Connor, B.P., Raman, V.S., Erickson, L.D., Cook, W.J., Weaver, L.K., Ahonen, C., Lin, L.-L., Mantchev, G.T., Bram, R.J., and Noelle, R.J. (2004). BCMA Is Essential for the Survival of Long-lived Bone Marrow Plasma Cells. *J. Exp. Med.* 199, 91–98.
- Peperzak, V., Vikström, I., Walker, J., Glaser, S.P., LePage, M., Coquery, C.M., Erickson, L.D., Fairfax, K., Mackay, F., Strasser, A., et al. (2013). Mcl-1 is essential for the survival of plasma cells. *Nat. Immunol.* 14, 290–297.
- Bolkun, L., Grubczak, K., Schneider, G., Zembko, P., Radzikowska, U., Singh, P., Kloczko, J., Ratajczak, M.Z., Moniuszko, M., and Eljaszewicz, A. (2016). Involvement of BAFF and APRIL in Resistance to Apoptosis of Acute Myeloid Leukemia. *J. Cancer* 7, 1979–1983.
- Bossen, C., and Schneider, P. (2006). BAFF, APRIL and their receptors: structure, function and signaling. *Semin. Immunol.* 18, 263–275.

+ 1 800-810-0816 (US/Canada/EU)
 + 86 400-682-2521 (Asia & Pacific)
 techsupport@acrobiosystems.com
 www.acrobiosystems.com
 1 Innovation Way,
 Newark, DE 19711